



Welcome to...

SPRINGVIEW • NEBRASKA

2016 U.S. Census Population

| | |
|------------------|-----|
| Springview | 232 |
| Keya Paha County | 791 |



The Table of Contents and section headings are hot linked within this Community Guide.
Clicking on the section headings will return you to the Table of Contents.

The following pages contain basic information about Springview, Nebraska. This information was compiled by the North Central Development Center, Village of Springview, and Nebraska Public Power District in order to promote community development and quality of life.

| TABLE OF CONTENTS |
|--|
| ECONOMIC DEVELOPMENT – 3 |
| LABOR – 4 |
| TRANSPORTATION /COMMUNICATIONS – 5 |
| UTILITIES – 6 |
| LOCAL GOVERNMENT /TAX STRUCTURE – 7 |
| EDUCATION – 8 |
| QUALITY OF LIFE – 9 |
| AGRICULTURE – 10 |
| CLIMATE – 11 |

CONTACTS

Patsy S. Cook

Clerk
Village of Springview
Springview, Nebraska
Office: (402) 497-2901
Email: patscook@threeriver.net
springview-ne.com

Kristin Olson

Executive Director
North Central Development Center
Springview, Nebraska
Office: (402) 387-2740
Cell: (402) 760-3834
Email: nccddirector@gmail.com

Karen Hallock

Chair
Keya Paha Revitalization Committee
Springview, Nebraska
Email: ekhallock@threeriver.net

Mary M. Plettner, CEcD

Economic Development Manager
Nebraska Public Power District
Columbus, Nebraska
Office: (402) 563-5534
Cell: (402) 750-1907
Email: mmplett@nppd.com
sites.nppd.com

ECONOMIC DEVELOPMENT

The Village of Springview is a member of the North Central Development Center (NCDC) and Central Nebraska Economic Development District (CNEDD) that work for industrial development in Springview. Activities include providing business retention and expansion, and grant writing.

Firms with retail sales tax permits in Springview reported 2017 net taxable retail sales of \$2,404,348, while Keya Paha County reported retail sales of \$2,795,018.

For more information on available sites and buildings go to sites.nppd.com.

Springview's Leading Employers

| Employers | Product or Service | Employees |
|-------------------------------|----------------------|-----------|
| Keya Paha County Schools | Education | 28 |
| Keya Paha County | Government | 21 |
| Turbine Mart | Convenience Store | 10 |
| Sawle Mill Inc. | Lumber Products | 8 |
| Ferguson Feeding | Cattle Feeding | 6 |
| Hallock Construction | Contract Builder | 5 |
| Springview Implement & Supply | Hardware Retailer | 3 |
| Town & Country Market | Grocery Store | 3 |
| Hespe Auto Center | Auto Repairs | 3 |
| Farmers Ranchers Coop | Feed and Ag Supplies | 3 |



Turbine Mart



Sawle Mill Inc.



Town and Country Market



Hespe Auto Center

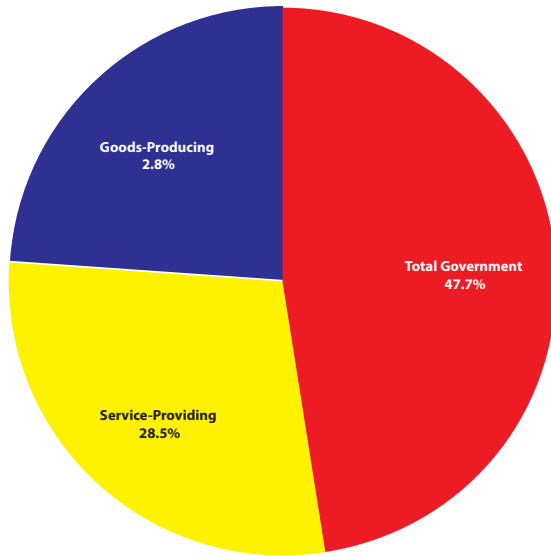


Farmers Ranchers Cooperative

LABOR

Nonfarm Wage & Salary Employment

KEYA PAHA COUNTY
2016 ANNUAL AVERAGE



Source: Nebraska Department of Labor

Workforce

The Nebraska Department of Labor serves employers and job seekers across Nebraska through its "Career Centers" located across the state. Services for employers include employee recruitment and screening, posting job openings, tax credit information, and labor market and labor law information. Job seekers can find a full array of employment and training related services including on-site services provided by a network of mandatory Workforce Innovation and Opportunity Act partners. To access Nebraska Department of Labor's One-Stop for Jobs, go to networks.nebraska.gov.

Keya Paha County Labor Supply

ANNUAL AVERAGE 2016

| | Keya Paha County & Contiguous Counties* | Keya Paha County |
|--|---|------------------|
| Nonfarm wage and salary workers | 471 | 151 |
| Total employment | 860 | 653 |
| Labor force population | 884 | 667 |
| ADDITIONAL POTENTIAL LABOR SUPPLY | | |
| Commuting out of county (2015) | | 145 |
| Unemployed | | 14 |
| Total | | 160 |

NOTE: Does not include estimated number of homemakers, seasonal and part-time workers, and workers who would shift from low-paying jobs who could be expected to work for industry.

*Contiguous Nebraska counties include Boyd, Brown, Cherry, Holt, and Rock.

Unemployment Rate

2016 ANNUAL AVERAGE

| | |
|------------------|------|
| Keya Paha County | 2.1% |
| Nebraska | 3.2% |
| United States | 4.9% |

Source: U.S. Bureau of Labor Statistics

Unionization

Nebraska has a right to work provision in its constitution.

Wage Sampling

Hourly wage rates for various occupations, northeast, Nebraska

| Job Title | 10th Percentile | 50th Percentile | 90th Percentile |
|--|-----------------|-----------------|-----------------|
| Accountants and Auditors | 18.62 | 28.10 | 47.10 |
| Computer Programmers | 14.20 | 28.31 | 44.84 |
| Registered Nurses | 19.98 | 27.41 | 37.54 |
| Retail Salespersons | 9.28 | 10.29 | 18.34 |
| Secretaries and Administrative Assistants, Except Legal, Medical | 10.52 | 14.28 | 19.37 |
| Customer Service Representatives | 10.09 | 14.34 | 23.45 |
| Office Clerks, General | 9.54 | 12.24 | 18.48 |
| Assemblers and Fabricators, All Other | 10.52 | 14.22 | 18.54 |
| Laborers and Freight, Stock, and Material Movers, Hand | 10.78 | 14.88 | 19.92 |
| Machinists | 10.96 | 17.94 | 24.27 |
| Welders, Cutters, Solderers, and Brazers | 13.82 | 18.16 | 23.89 |
| Welding, Soldering, and Brazing Machine Setters* | 13.60 | 17.79 | 23.75 |
| Heavy and Tractor-Trailer Truck Drivers | 13.94 | 20.45 | 30.39 |
| Cutting, Punching, and Press Machine Setters/Operators | 13.52 | 17.05 | 23.67 |
| Electricians | 13.92 | 19.61 | 29.83 |
| Tool and Die Makers | 17.20 | 22.98 | 30.65 |

*Wage information taken from Nebraska Statewide

Source: Nebraska Workforce Development, Occupational Employment Statistics Program, Fourth Quarter 2017

TRANSPORTATION

Location/Highways

Springview, the county seat, is located in the center of Keya Paha County on U.S. Highway 183, 13 miles south of the South Dakota border. U.S. Highway 183 (north-south) and State Highway 12 (east-west) run through town. Springview is 155 miles southeast of Norfolk, 173 miles southeast of Kearney, and 189 miles southeast of Grand Island.

Rail

The nearest rail service, Nebraska Northeastern Railway Company, has a line serving O'Neill, approximately 80 miles southeast of Springview.

Air

The Ainsworth Regional Airport, located 25 miles southwest of Springview, has two asphalt runways (6,824 feet and 5,501 feet).

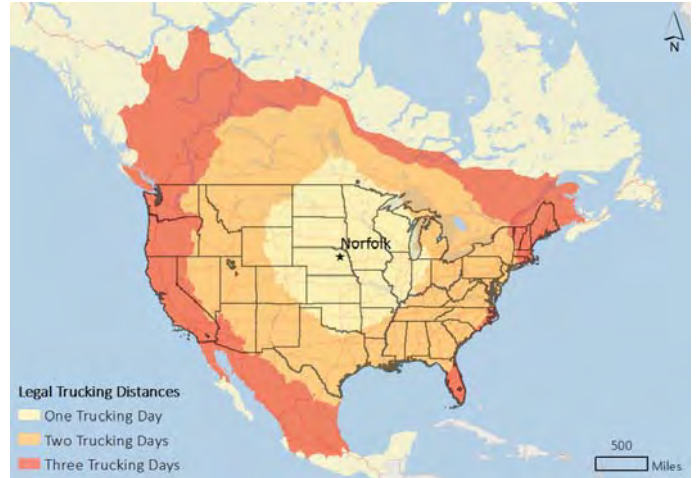
Nearest Commercial Air Service:

- **North Platte Regional Airport**, North Platte, Nebraska
159 miles, 173 minutes
- **Central Nebraska Regional Airport**, Grand Island, Nebraska
189 miles, 190 minutes

Trucklines

More than 13,500 licensed motor carriers with worldwide connections are based in Nebraska and serve businesses throughout North America. The following trucking map is based on Norfolk, Nebraska.

Legal Trucking Distance Map



Source: Nebraska Department of Economic Development. Legal Trucking Distances from Norfolk, Nebraska, 2016; using ESRI Business Analyst Desktop.

COMMUNICATIONS

Telecommunications Provider

- Three River Telco
www.threeriver.net

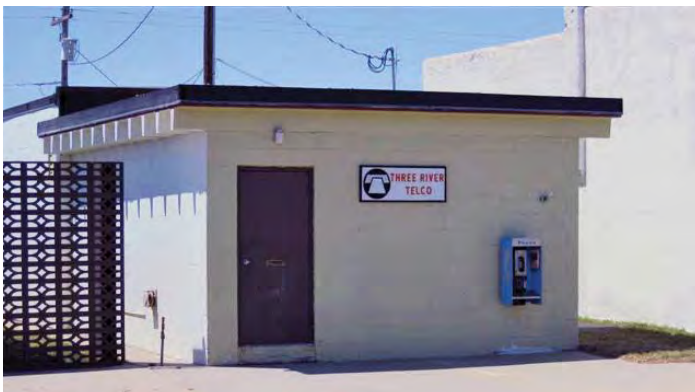
Internet Providers

- Three River Telco
www.threeriver.net

Post Office & Package Delivery Service

The U.S. Postal Service in Springview has one mail receipt and one dispatch daily.

Federal Express, United Parcel Service, ASAP, and Speedy provide package delivery services in the Springview area.



Three River Telco



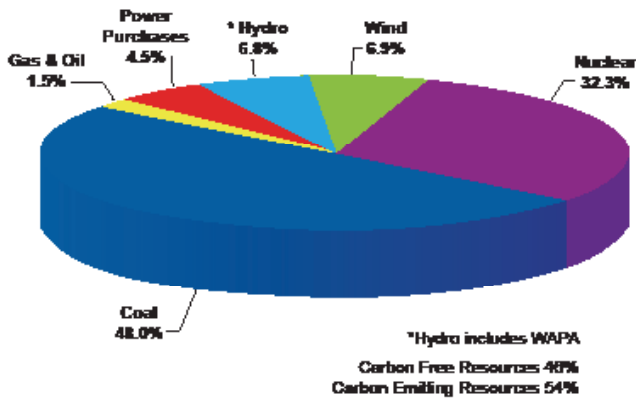
Springview Post Office

Nebraska Highlights

Energy costs are often a considerable part of any business' operational budget. These costs can vary greatly between states, but in Nebraska (the only state in the nation where all electric utilities are publicly owned) electric costs are passed to consumers at low, cost-of-service rates. As a result, the state claims industrial rates well below the national average. Nebraska electric utilities are able to offer low rates, in part, because they draw from a balanced and efficient "mix" of generation resources.

NPPD's Sources of Energy - 2016

(Native Load + Nonfirm Sales)



NPPD has a wholesale Economic Development Rate (EDR) for customers with qualifying projects of new or additional electric load. To be eligible for the lower, incentivized EDR, a customer must be served by an NPPD wholesale customer or NPPD's Retail Division. The project must add new or additional electric load of at least one megawatt, have a minimum monthly load factor of 60 percent, and the customer must also enter into a written agreement with the State of Nebraska or any political subdivision to provide an economic development project pursuant to state or local law, and have a written service agreement with NPPD.

Electricity

Springview is provided electric service by KBR Rural Public Power District, a wholesale power customer of Nebraska Public Power District (NPPD).

Keya Paha County (Springview and surrounding area) is served by a 69 kV transmission line from 28,000 kVA transformer at a 115 kV substation. Electricity is distributed over KBR's 12.5/7.2 kV distribution system. The system is tied into NPPD's statewide grid.

Prospective customers should contact Robert Beatty, General Manager, at KBR Rural Public Power District, Ainsworth, Nebraska, (402) 387-1120, bobkbr@threeriver.net, www.kbrpower.com.

Prospective customers should contact Nebraska Public Power District, (877) 275-6773, www.nppd.com, for further information regarding electric rates and services.

Water & Sewerage

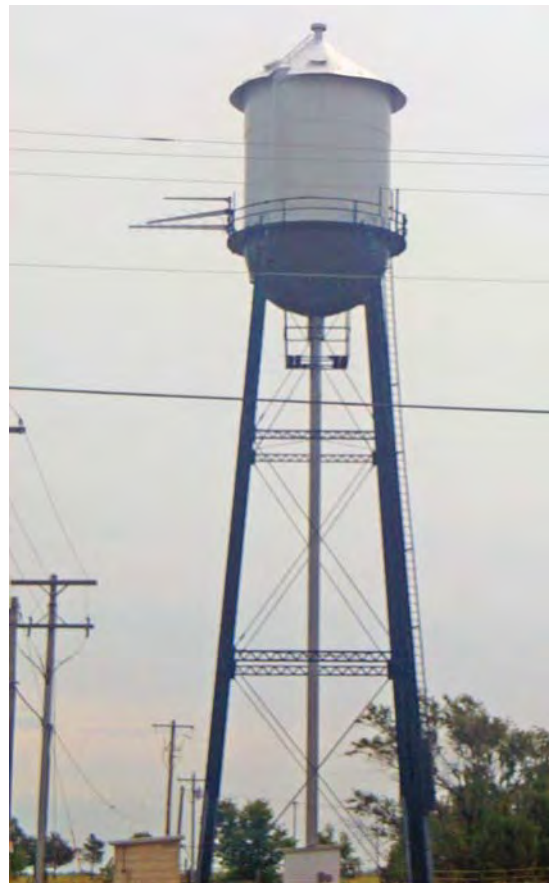
The municipal water system in Springview is supplied by two wells, which have an average depth of 197 feet. The system, serving the entire village, has a combined pumping capacity of 675 gallons per minute and an overhead storage capacity of 62,000 gallons. The system has a maximum capacity of 970,000 gallons per day.

Springview has a municipal sanitary sewerage system and a storm sewer system.

Visit www.springview-ne.com for more information regarding water and sewerage.

Recycling

Recyclables are collected by a private company. The following items are accepted: aluminum, paper, and tin.



Springview Water Tower

LOCAL GOVERNMENT

Springview is governed by a chairman and board of trustees.

Keya Paha County has three precincts and two townships. The county is governed by three county commissioners.

Fire Protection

Fire protection is provided to the village by a 38-member volunteer fire department. Springview has one fire station and 30 fire hydrants.

Law Enforcement

The village of Springview contracts with the Keya Paha County Sheriff's Department to provide law enforcement in the community.

The Keya Paha County Sheriff's Department has one full-time and one part-time sworn officer and one support personnel. Regular patrol by the sheriff's department provides protection to existing industries in the area.

Streets

Springview has 4.25 miles of streets; 80 percent of the streets are hard-surfaced, 20 percent gravel, 40 percent asphalt. Seventy-five percent of the streets have curbs and 40 percent have sidewalks.

For more information on Springview's local government, visit www.springview-ne.com.



Springview Fire Department

| 2016 Crime Rates (PER 1,000 POPULATION) | | |
|--|----------------|-----------------|
| | Violent Crimes | Property Crimes |
| Nebraska | 2.9 | 22.6 |
| U.S. Total | 3.9 | 24.5 |

Source: www.ncc.nebraska.gov

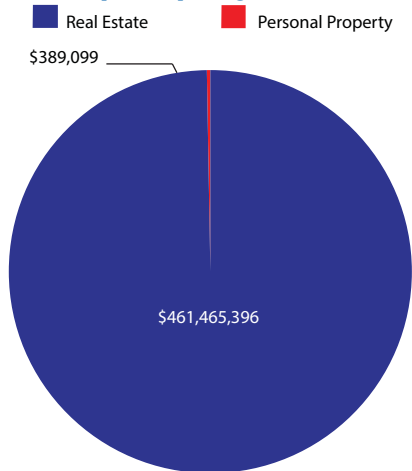
TAX STRUCTURE

Nebraska Tax Incentives

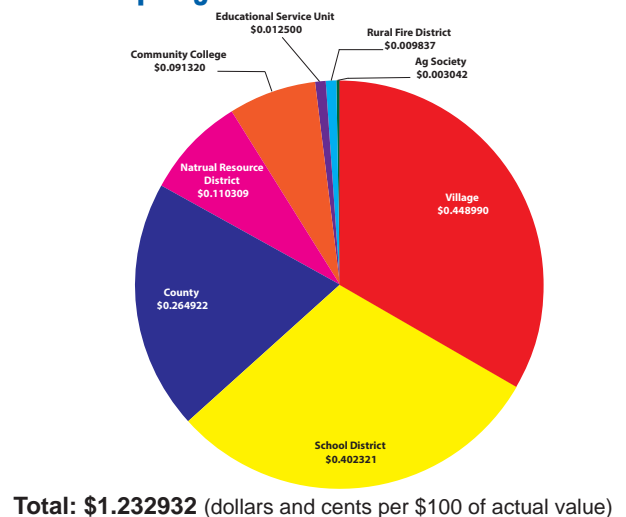
Nebraska's performance-based tax incentive programs demonstrate the state's commitment to creating a favorable business environment for your business expansion or location. Known collectively as the "Nebraska Advantage Package," this multi-tiered program provides investment credits, wage

credits, sales tax refunds based on investment, and job creation in Nebraska. Qualified companies, large and small can take advantage of these benefits. For more information on the qualifications and potential benefits available to your company, contact the Nebraska Department of Economic Development (800) 426-6505 or visit opportunity.nebraska.gov.

2016 Actual Valuation City of Springview



Springview 2016 Tax Rates



EDUCATION

Keya Paha County School District

School District 100 in Keya Paha County covers approximately 773 square miles and had a 2016–17 actual valuation of \$479,299,177, with an actual per student of \$27,140. Bus services are provided between the communities. This Class 2 school is accredited by the Nebraska Department of Education. For more information, visit www.keyapahcountyschools.org.

Keya Paha County Schools

| | Students | Teacher/ Pupil Ratio |
|--|----------|----------------------------|
| Elementary (K-6), Springview | 40 | 1:6 |
| Jr./Sr. High School (7–12), Springview | 46 | 1:10 |

ACT Scores (2016–17)

| | Composite |
|----------|-----------|
| Nebraska | 21.4 |
| National | 21.0 |

Source: Nebraska Department of Education

Educational Service Unit

Educational Service Unit 17 (ESU), headquartered in Ainsworth, serves four counties including Keya Paha County. For more information regarding services, visit www.esu17.org.

Higher Education

Springview is located within 155 miles of Northeast Community College.

An abundance of public colleges and universities are available in Nebraska. There are also a number of community colleges as well as private colleges and trade schools. A large number of degree programs are available and some institutions offer courses and workshops specially tailored to meet specific training needs of industry, education, and business.



Elementary School



Keya Paha County Library



Keya Paha County High School

QUALITY OF LIFE

Hospital/Clinic

Brown County Hospital, located in Ainsworth is 25 miles southwest of Springview. A 23-acute care, skilled, out-patient and home-helath facility. This critical access facility provides in-patient, out-patient, and specialty clinics. For more information, visit www.browncountyhospital.org.

Rescue Squad

The Springview Rescue Squad has two ambulances, 12 emergency medical technicians, and 12 first responders.

Nursing Homes

The nearest nursing homes are in Ainsworth.

Independent/Assisted Living

Independent and assisted living is available in Ainsworth.

Low Cost Communities

Low Cost and retirement housing is available in Ainsworth.

Churches (Denomination)

- Assembly of God
- Lutheran
- Methodist
- Nondenominational
- Seventh-Day Adventist

Recreation

There are two city parks in Springview covering 320 acres. **Springview City Park** has a picnic shelter and rest rooms. The **Springview Recreation Area** has picnic shelters, rest rooms, showers, RV hook-ups, and swings.

Financial Institutions

- West Plains Bank

Housing

One new home was constructed in the past three years and it is estimated one will be built in 2018. The cost of new home construction averages \$128 per square foot.



Springview City Park



Keya Paha County Activity Center Senior Citizen



Keya Paha County Historical Society Museum

In 2016 Nebraska ranked third among the states in corn exports and in total cash receipts from all farm commodities. Nebraska's farms and ranches utilized 45.2 million acres or 91 percent of the state's total land area. Cash receipts from farm markets in 2016 contributed more than \$21.5 billion to the state's economy and 6.0 percent of the U.S. total. Food processing is the state's largest manufacturing sector and foreign markets are important for many of the state's manufacturers.

Sources: *Nebraska Agriculture Rankings - USDA ERS, USDA NASS; Food Processing Status - Bureau of Labor Statistics, Quarterly Census of Employment and Wages*

The **Ogallala Aquifer** underlies 174,000 square miles in parts of eight states. The Ogallala Aquifer within Nebraska contains approximately 65 percent of the water storage in the entire aquifer. With the implementation of more efficient irrigation systems and other water management measures, the Ogallala Aquifer will remain a valuable resource in Nebraska.



Nebraska's Rank Among States

1st...

- Beef and Veal, Exports, 2017
- Commercial Red Meat, 2017
- Commercial Cattle Slaughter, 2017
- Great Northern Beans, 2017
- All Cattle on Feed, Jan. 2018
- Popcorn, 2012

2nd...

- All Cattle and Calves, Jan. 2018
- Cash Receipts from All Livestock and Products, 2016
- All Hay, 2017
- Pinto Beans, 2017
- Proso Millet, 2017
- Light Red Kidney Beans, 2017
- Bison, Dec. 2012

3rd...

- Corn for Grain, 2017
- Corn Exports, 2016
- Cash Receipts from All Farm Commodities, 2016
- All Dry Edible Beans, 2017

4th...

- Beef Cows, Jan. 2018
- Soybean, 2017
- Alfalfa Hay, 2017
- Land in Farms and Ranches, 2017

5th...

- Soybean Exports, 2016
- Agricultural Exports, 2016
- Cash Receipts from All Crops, 2016
- Grain Sorghum, 2017
- Sugar Beets, 2017
- Pork Exports, 2017
- Egg Exports, 2017

6th...

- Harvested Acres of Principal Crops, 2017
- Commercial Hog Slaughter, 2017
- All Hogs and Pigs on Farms, Dec. 2017

7th...

- Sunflower, 2017

8th...

- Winter Wheat, 2017

Source: *Nebraska Department of Agriculture - USDA, NASS, NFO, and NBA*

2012 Statistics

| | Keya Paha County | State of Nebraska |
|--|--------------------|-------------------|
| Number of Farms..... | 244..... | 49,969 |
| Land in Farms (acres) | 465,741..... | 45,331,783 |
| Average Size of Farms (acres)..... | 1,909..... | 907 |
| Market Value of Agricultural Products Sold | \$107,079,000..... | \$23,068,756,000 |
| Market Value Per Farm..... | \$438,850..... | \$461,661 |
| Total Acres Irrigated..... | 20,138..... | 8,296,573 |
| Percent of Farmland Irrigated..... | 4.3%..... | 18.3% |

Source: 2012 Census of Agriculture

Five-Year Average Production of Leading Crops

(2012-2016)

| | Keya Paha County | State of Nebraska |
|-------------------------------|------------------|-------------------|
| Corn for Grain (bushels)..... | 2,978,000 | 1,580,170,000 |
| Hay, Alfalfa (tons) | 21,420 | 5,505,600 |

Five-Year Average Livestock Population

(2012-2016)

| | Keya Paha County | State of Nebraska |
|------------------|------------------|-------------------|
| All Cattle | 62,200..... | 6,360,000 |

Source: National Agricultural Statistics Service

CLIMATE

Nebraska has a continental climate, with hot summers and cold winters. Temperatures are highly variable from season to season and year to year.

Precipitation is also variable and ranges from an annual average of 15–20 inches in the west to 30–35 inches in southwest Nebraska.

The growing season in Nebraska fluctuates in length, but on average it ranges from 120 days in the extreme northwest to 170 days in the southeast.

For more information regarding Nebraska's climate, visit High Plains Climate Center, University of Nebraska-Lincoln at www.hprcc.unl.edu.



Keya Paha County Courthouse



City Office Cook Tax Office

SPRINGVIEW • NEBRASKA



Nebraska Public Power District

Always there when you need us

www.nppd.com

Nebraska Public Power District (NPPD), Nebraska's largest electric utility, assists in economic development for the areas it serves. For more information on NPPD's economic development assistance, contact the Economic Development Department, 1414 15th Street, P.O. Box 499, Columbus, Nebraska 68602-0499, (877) 275-6773, Ext. 5534, email: econdev@nppd.com, or visit our website at sites.nppd.com.

© Nebraska Public Power District, May 2018

f597edb