



# Welcome to... **ATKINSON** • NEBRASKA

2016 U.S. Census Population	
Atkinson	1,249
Holt County	10,250



The Table of Contents and section headings are hot linked within this Community Guide. Clicking on the section headings will return you to the Table of Contents.

*The following pages contain basic information about Atkinson, Nebraska. This information was compiled by the Atkinson Area Chamber of Commerce, City of Atkinson, and Nebraska Public Power District in order to promote community development and quality of life.*

## TABLE OF CONTENTS

**ECONOMIC DEVELOPMENT – 3**

**LABOR – 4**

**TRANSPORTATION / COMMUNICATIONS – 5**

**UTILITIES – 6**

**LOCAL GOVERNMENT / TAX STRUCTURE – 7**

**EDUCATION – 8**

**QUALITY OF LIFE – 9**

**AGRICULTURE – 10**

**CLIMATE – 11**

## CONTACTS

### **Lou Ann Tooker**

Director of Economic Development  
City of Atkinson  
Atkinson, Nebraska  
Office: (402) 925-5313  
Cell: (402) 340-8011  
Email: [louann.tooker@atkinsonne.com](mailto:louann.tooker@atkinsonne.com)

### **Pam Winer**

President  
Atkinson Area Chamber of Commerce  
Atkinson, Nebraska  
Office: (402) 925-5600  
Cell: (402) 340-4811  
Email: [atkinsonmotel@qwestoffice.net](mailto:atkinsonmotel@qwestoffice.net)

### **Nancy Kopejtka**

City Clerk / Treasurer  
City of Atkinson  
Atkinson, Nebraska  
Office: (402) 925-5313  
Cell: (402) 340-0701  
Email: [nancy.kopejtka@atkinsonne.com](mailto:nancy.kopejtka@atkinsonne.com)

### **Mary M. Plettner, CEcD**

Economic Development Manager  
Nebraska Public Power District  
Columbus, Nebraska 68602-0499  
Office: (402) 563-5534  
Cell: (402) 750-1907  
Email: [mmplett@nppd.com](mailto:mmplett@nppd.com)  
[econdev.nppd.com](http://econdev.nppd.com)

## COMMUNITY WEBSITE

[www.atkinsonne.com](http://www.atkinsonne.com)

# ECONOMIC DEVELOPMENT

The City of Atkinson is a very progressive community with an Economic Development office. Economic development is a major goal for community planning efforts.

Atkinson Economic Development is funded by the city and partially through the Local Options Municipal Sales Tax Program (LB840). Programs offered include LB840 program (loans and grants for business start-ups, expansions, business retention, business recruitment, and job training assistance); Down Payment Assistance (purchasing a home), Housing Rehabilitation (assists homeowners with needed household repairs), and Tax Increment Financing (TIF).

The City of Atkinson has (5) one acre sites and (1) 3.5 acre lot available for commercial use. The price of the available property is \$5,000 per acre. For more information on available sites and buildings go to [econdev.nppd.com](http://econdev.nppd.com).

Firms with retail sales tax permits in Atkinson reported 2016 net taxable retail sales of \$19,479,588, while Holt County reported retail sales of \$119,653,081.

## Atkinson's Leading Employers

Employers	Product or Service	Employees
Christensen Farms	Agriculture	145
West Holt Medical Services	Health Care	90
Good Samaritan Society	Health Care	75
West Holt Public Schools	Education	70
Green Plains, LLC	Ethanol Manufacturing	50
Mitchell Equipment	Agriculture	45
AZZ Galvanizing	Manufacturing	40
Oppliger Trucking	Agriculture	20
Braun's Food Center & Locker	Groceries / Meat Processing	16*
Great Western Bank	Financial	9

\*Plus 14 part-time



Green Plains, LLC



Great Western Bank



West Holt Medical Services



Braun's Food Center & Locker

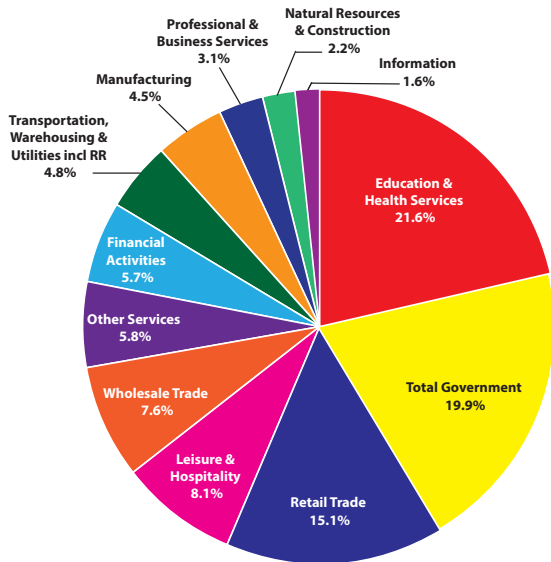


Mitchell Equipment

# LABOR

## Nonfarm Wage & Salary Employment

HOLT COUNTY  
2015 ANNUAL AVERAGE



Source: Nebraska Department of Labor

## Workforce

The Nebraska Department of Labor serves employers and job seekers across Nebraska through its "Career Centers" located across the state. Services for employers include employee recruitment and screening, posting job openings, tax credit information, and labor market and labor law information. Job seekers can find a full array of employment and training related services including on-site services provided by a network of mandatory Workforce Innovation and Opportunity Act partners. To access Nebraska Department of Labor's One-Stop for Jobs, go to [networks.nebraska.gov](http://networks.nebraska.gov).

## Holt County Labor Supply

ANNUAL AVERAGE 2015

	Holt County & Contiguous Counties*	Holt County
Non-farm wage and salary workers	11,768	4,235
Total employment	18,431	5,778
Labor force population	18,359	5,910
<b>ADDITIONAL POTENTIAL LABOR SUPPLY</b>		
Commuting out of county (2014)		992
Unemployed		132
<b>Total</b>		<b>1,124</b>

NOTE: Does not include estimated number of homemakers, seasonal and part-time workers, and workers who would shift from low-paying jobs who could be expected to work for industry.

\*Contiguous Nebraska counties include Antelope, Boyd, Garfield, Keya Paha, Knox, Loup, Rock, and Wheeler.

## Unemployment Rate

2016 ANNUAL AVERAGE

Holt County	2.6%
Nebraska	3.2%
United States	4.9%

Source: U.S. Bureau of Labor Statistics

## Unionization

Nebraska has a right to work provision in its constitution.

## Wage Sampling

Hourly wage rates for various occupations, Northeast Region, Nebraska

Job Title	10th Percentile	50th Percentile	90th Percentile
Accountants and Auditors	18.29	27.59	46.25
Computer Programmers	13.98	27.88	44.15
Registered Nurses	19.68	26.99	36.96
Retail Salespersons	9.13	10.12	18.03
Secretaries and Administrative Assistants, Except Legal, Medical	10.34	14.04	19.05
Customer Service Representatives	9.93	14.10	23.07
Office Clerks, General	9.38	12.04	18.18
Assemblers and Fabricators, All Other	10.29	13.92	18.14
Laborers and Freight, Stock, and Material Movers, Hand	10.55	14.55	19.48
Machinists	10.72	17.55	23.75
Welders, Cutters, Solderers, and Brazers	13.52	17.77	23.37
Welding, Soldering, and Brazing Machine Setters*	13.30	17.41	23.24
Heavy and Tractor-Trailer Truck Drivers	13.64	20.00	29.73
Cutting, Punching, and Press Machine Setters/Operators	13.23	16.68	23.16
Electricians	13.66	19.23	29.26
Tool and Die Makers	16.83	22.48	29.99

\*Wage information taken from Nebraska Statewide

Source: Nebraska Workforce Development, Occupational Employment Statistics Program, First Quarter 2017

# TRANSPORTATION

## Location/Highways

Atkinson is located in the west central part of Holt County. O'Neill, the county seat of Holt County, is approximately 18 miles southeast of Atkinson. U.S. Highway 20 and State Highway 11 intersect in Atkinson. Atkinson is located 93 miles northwest of Norfolk, Nebraska; 130 miles northwest of Grand Island, Nebraska; 143 miles west of Sioux City, Iowa; 206 miles northwest of Omaha, Nebraska; and 226 miles northwest of Lincoln, Nebraska.

## Rail

The nearest rail service, Nebraska Northeastern Railroad, is located in O'Neill, 18 miles southeast of Atkinson.

## Air

The Stuart-Atkinson Airport, located three miles northwest of Atkinson, has a 4,040-foot paved and lighted runway and a 3,000-foot grass runway.

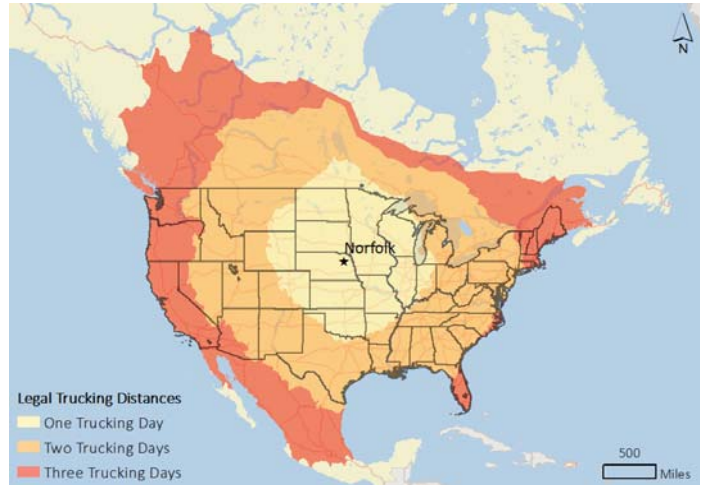
### Nearest Commercial Air Service:

- **Central Nebraska Regional Airport**, Grand Island, Nebraska  
130 miles, 135 minutes
- **Sioux Gateway Airport**, Sioux City, Iowa  
143 miles, 153 minutes
- **Eppley Airfield**, Omaha, Nebraska  
206 miles, 220 minutes
- **Lincoln Airport**, Lincoln, Nebraska  
226 miles, 221 minutes

## Trucklines

More than 13,500 licensed motor carriers with worldwide connections are based in Nebraska and serve businesses throughout North America. The following trucking map is based on Norfolk, Nebraska, 93 miles southeast of Atkinson.

### Legal Trucking Distance Map



Source: Nebraska Department of Economic Development. Legal Trucking Distances from Norfolk, Nebraska, 2016; using ESRI Business Analyst Desktop.

# COMMUNICATIONS

## Telecommunications Provider

- Century Link  
[www.centurylink.com](http://www.centurylink.com)
- Viaero  
[www.viaero.com](http://www.viaero.com)

## Internet Providers

- Fort Randall Cable  
[www.hcinet.net](http://www.hcinet.net)
- Hughes Net  
[www.hughesnet.com](http://www.hughesnet.com)
- Telebeep  
[www.telebeep.com](http://www.telebeep.com)
- Three River Telco  
[www.threeriver.net](http://www.threeriver.net)

## Post Office & Package Delivery Service

The U.S. Postal Service in Atkinson has one mail receipt and one dispatch daily.

Federal Express, United Parcel Service, and U.S. Postal Service provide package delivery services in the Atkinson area.



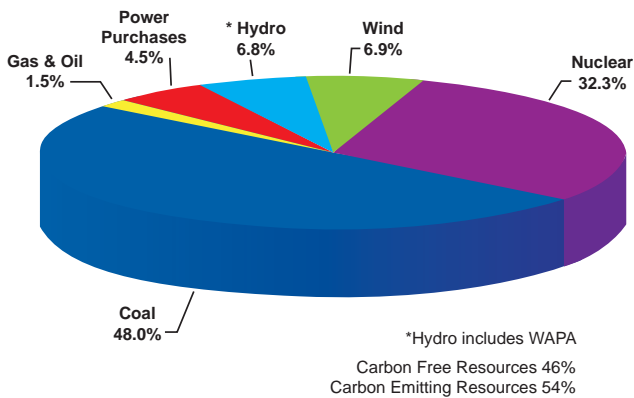
U.S. Post Office

## Nebraska Highlights

Energy costs are often a considerable part of any business' operational budget. These costs can vary greatly between states, but in Nebraska (the only state in the nation where all electric utilities are publicly owned) electric costs are passed to consumers at low, cost-of-service rates. As a result, the state claims industrial rates well below the national average. Nebraska electric utilities are able to offer low rates, in part, because they draw from a balanced and efficient "mix" of generation resources.

### NPPD's Sources of Energy - 2016

(Native Load + Nonfirm Sales)



NPPD has a wholesale Economic Development Rate (EDR) for customers with qualifying projects of new or additional electric load. To be eligible for the lower, incentivized EDR, a customer must be served by an NPPD wholesale customer or NPPD's Retail Division. The project must add new or additional electric load of at least one megawatt, have a minimum monthly load factor of 60 percent, the customer must also enter into a written agreement with the State of Nebraska or any political subdivision to provide an economic development project pursuant to state or local law, and have a written service agreement with NPPD.

## Electricity

Atkinson is provided retail electric service by Nebraska Public Power District (NPPD). The city's power is provided by two separate distribution substations, which are connected to NPPD's sub transmission system at 69 kV. This looped system is connected to NPPD's statewide transmission system. The primary distribution system in Atkinson is 4.16 kV (5 MVA) with looped feeds to allow redundant service. The community is also partially served by primary distribution at 7.2 kV (10 MVA) that serves the ethanol facility and surrounding commercial and industrial tracts.

Prospective customers should contact Nebraska Public Power District, (877) 275-6773, [www.nppd.com](http://www.nppd.com), for further information regarding electric rates and services.

## Natural Gas

Black Hills Energy is a retail supplier of natural gas in Atkinson. For more information, visit [www.blackhillsenergy.com](http://www.blackhillsenergy.com).

## Water & Sewerage

The municipal water system in Atkinson is supplied by four wells, which have an average depth of 160 feet. The system, serving the entire city, has a combined pumping capacity of 1,730 gallons per minute and an overhead storage capacity of 100,000 gallons. The system has a maximum capacity of 2,591,200 gallons per day.

Atkinson has a municipal sanitary sewerage system and storm sewer system. The mechanical biological treatment plant (MBT) has a daily capacity of 140,000 gallons.

Visit [www.atkinsonne.com](http://www.atkinsonne.com) for more information regarding water and sewerage.

## Recycling

Recyclables are collected by a private company. The following items are accepted: paper, cardboard, numbers 1 and 2 plastics, tin, and aluminum.



Atkinson Fire Hall

# LOCAL GOVERNMENT

Atkinson is governed by a mayor-council form of government and has a city clerk.

Holt County has 37 townships, who are governed by seven county supervisors.

## Fire Protection

Fire protection is provided to the city by a 34-member volunteer fire department. Atkinson has one fire station and 145 fire hydrants.

## Law Enforcement

The Atkinson Police Department provides law enforcement in the community. Regular patrol by two full-time police officers provides protection to existing industries in the area.

The Holt County Sheriff's Department has seven sworn officers and two support personnel. Regular patrol by the sheriff's department provides protection to existing industries in the area.

## Streets

Atkinson has 51.72 miles of streets; 81 percent of the streets are hard-surfaced, with 48 percent concrete, 33 percent asphalt, and 19 percent gravel. Forty-eight percent of the streets have curbs and 33 percent have sidewalks.

For more information on Atkinson's local government, visit [www.atkinsonne.com](http://www.atkinsonne.com).

## 2015 Crime Rates

(PER 1,000 POPULATION)

	Violent Crimes	Property Crimes
Nebraska	2.7	22.4
U.S. Total	3.7	24.9

Source: [www.ncc.nebraska.gov](http://www.ncc.nebraska.gov)



Atkinson City Offices

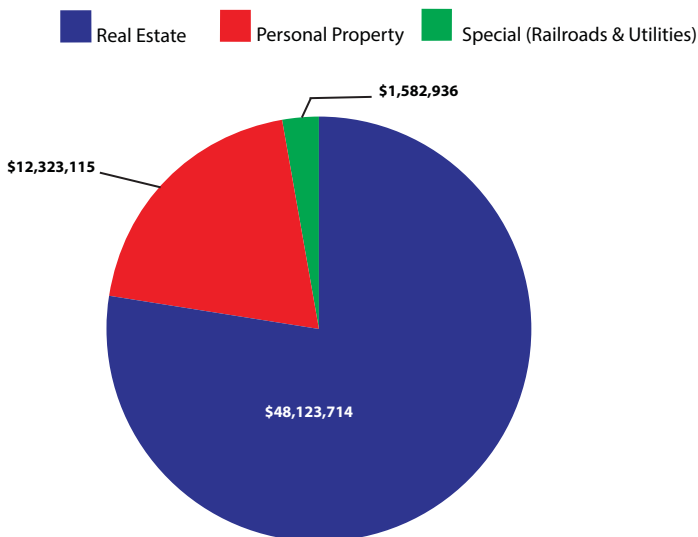
# TAX STRUCTURE

## Nebraska Tax Incentives

Nebraska's performance-based tax incentive programs demonstrate the state's commitment to creating a favorable business environment for your business expansion or location. Known collectively as the "Nebraska Advantage Package," this multi-tiered program provides investment credits, wage

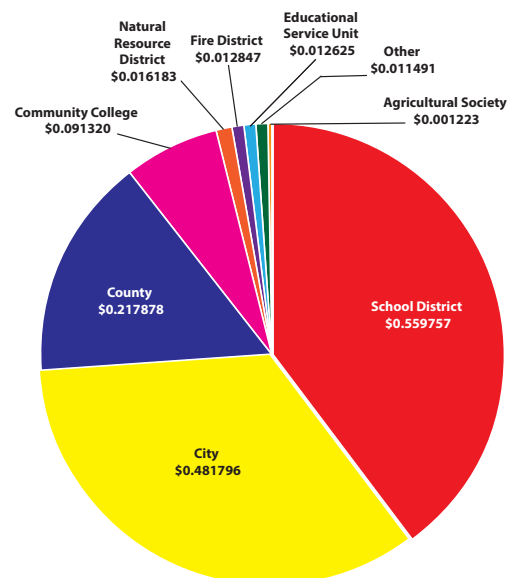
credits, sales tax refunds based on investment, and job creation in Nebraska. Qualified companies, large and small can take advantage of these benefits. For more information on the qualifications and potential benefits available to your company, contact the Nebraska Department of Economic Development (800) 426-6505 or visit [www.neded.org](http://www.neded.org).

## 2016 Actual Valuation City of Atkinson



Total: \$62,029,765

## Atkinson 2016 Tax Rates



Total: \$1.40512 (dollars and cents per \$100 of actual value)

# EDUCATION

## West Holt Public School District

West Holt Public School District 45-0239, in Holt County, covers approximately 930 square miles. A 2016–17 actual valuation of \$1,102,068,441, with an actual valuation per student of \$2,587,015. This Class 3 school is accredited by the state. For more information, visit [www.westholtps.org](http://www.westholtps.org).

### West Holt Schools

	Students	Teacher/ Pupil Ratio
Elementary (Pre-K-6)	273	1:10
Jr./Sr. High School (7–12)	153	1:7

### ACT Scores (2014–15)

	Composite
West Holt High School	22.4
Nebraska	21.5
National	21.0

Source: Nebraska Department of Education

## Educational Service Unit

Educational Service Unit 8 (ESU), headquartered in O'Neill, serves seven counties including Holt County. For more information regarding services, visit [www.esu8.org](http://www.esu8.org).

## Higher Education

Atkinson is located within 93 miles of two community colleges — Northeast Community College in O'Neill and Northeast Community College in Norfolk.

An abundance of public colleges and universities are available in Nebraska. There are also a number of community colleges as well as private colleges and trade schools. A large number of degree programs are available and some institutions offer courses and workshops specially tailored to meet specific training needs of industry, education, and business.



Atkinson Library



West Holt Elementary School



St. Joseph's School



West Holt High School



## Hospital

The **West Holt Memorial Hospital**, located in Atkinson, is a 17-bed critical access not-for-profit hospital. For more information, visit [www.westholtmed.org](http://www.westholtmed.org).

## Clinic

**West Holt Medical Clinic** and **Greater Sandhills Family Healthcare** are located in Atkinson. For more information, visit [www.westholtmed.org](http://www.westholtmed.org).

## Rescue Squad

The Atkinson Rescue Squad has three ambulances and 28 emergency medical technicians.

## Nursing Homes

Good Samaritan Society

## Assisted Living

Good Samaritan Society Prairie Winds

## Independent Living

Elkhorn Meadows

## Churches (Denomination)

- Assembly of God
- Catholic
- Christian Church
- Lutheran
- Methodist
- Presbyterian

## Recreation

There are two city parks in Atkinson covering 50 acres. **Mill Race Park** is equipped with tent/RV camping, hiking, fishing, picnic area, playground equipment, and disc golf. The **City Park** is home to the city swimming pool, playground equipment, picnic area, and ball fields.

## Financial Institutions

- Farmer's State Bank
- Great Western Bank
- Tri-County Bank

## Housing

Seven new homes were constructed in Atkinson in the past three years and it is estimated three homes will be built in the next three years. The cost of new home construction averages \$150–200 per square foot.



City Park



Mill Race Park



Swimming Pool



Atkinson-Stuart Country Club

## AGRICULTURE

In 2015 Nebraska ranked third among the states in corn exports and fourth in total cash receipts from all farm commodities. Nebraska's farms and ranches utilized 45.2 million acres or 91 percent of the state's total land area. Cash receipts from farm markets in 2015 contributed more than \$23 billion to the state's economy and 6.1 percent of the U.S. total. Food processing is the state's largest manufacturing sector and foreign markets are important for many of the state's manufacturers.

Sources: Nebraska Agriculture Rankings - USDA ERS, USDA NASS; Food Processing Status - Bureau of Labor Statistics, Quarterly Census of Employment and Wages

The **Ogallala Aquifer** underlies 174,000 square miles in parts of eight states. The Ogallala Aquifer within Nebraska contains approximately 65 percent of the water storage in the entire aquifer. With the implementation of more efficient irrigation systems and other water management measures, the Ogallala Aquifer will remain a valuable resource in Nebraska.



### Nebraska's Rank Among States

#### 1st...

Beef and Veal, 2016  
 Commercial Red Meat, 2016  
 Commercial Cattle Slaughter, 2016  
 Beans, Great Northern, 2016  
 Cattle and Calves on feed, All, Jan. 2017  
 Popcorn, 2012

#### 2nd...

Cattle and Calves, All, Jan. 2017  
 Beans, Pinto, 2016  
 Millet, Proso, 2016  
 Bison, Dec. 2012

#### 3rd...

Corn for Grain, 2016  
 Corn, Exports, 2015  
 Cash Receipts from All Livestock and Products, 2015  
 Beans, Light Red Kidney, 2016

#### 4th...

Cash Receipts, All Farm Commodities, 2015  
 Cash Receipts, All Crops, 2015  
 Agricultural Exports, 2015  
 Beans, Dry Edible, 2016  
 Beef Cows, Jan. 2017  
 Land in Farms and Ranches, 2015

#### 5th...

Soybean Exports, 2015  
 Soybeans, 2016  
 Sorghum for Grain, 2016

#### 6th...

Principal Crops, Harvested Acres, 2016  
 Hog Slaughter, 2016  
 Hogs and Pigs, All, Dec. 2016  
 Hay, All, 2016  
 Sugarbeets, 2016

#### 7th...

Sunflowers, 2016  
 Winter Wheat, 2016  
 Hay, Alfalfa, 2016

Source: Nebraska Department of Agriculture - USDA, NASS, NFO, and NBA

## 2012 Statistics

	Holt County	State of Nebraska
Number of Farms.....	1,279.....	49,969
Land in Farms (acres) .....	1,414,445.....	45,331,783
Average Size of Farms (acres).....	1,106.....	907
Market Value of Agricultural Products Sold .....	\$636,353,000.....	\$23,068,756,000
Market Value Per Farm.....	\$497,540.....	\$461,661
Total Acres Irrigated.....	280,234.....	8,296,573
Percent of Farmland Irrigated.....	19.8%.....	18.3%

Source: 2012 Census of Agriculture

## Five-Year Average Production of Leading Crops

(2012-2016)

	Holt County	State of Nebraska
Corn for Grain (bushels).....	34,303,800.....	1,580,170,000
Soybeans (bushels).....	5,084,860.....	273,982,000

## Five-Year Average Livestock Population

(2012-2016)

	Holt County	State of Nebraska
All Cattle .....	224,000.....	6,360,000

Source: National Agricultural Statistics Service

Holt County ranked in the top eight counties in the production of corn in two of the last five years, in the top five counties for two of the last four years in the production of oats, and in the top five counties for all five years in the production of cattle.



Atkinson Livestock Market

## CLIMATE

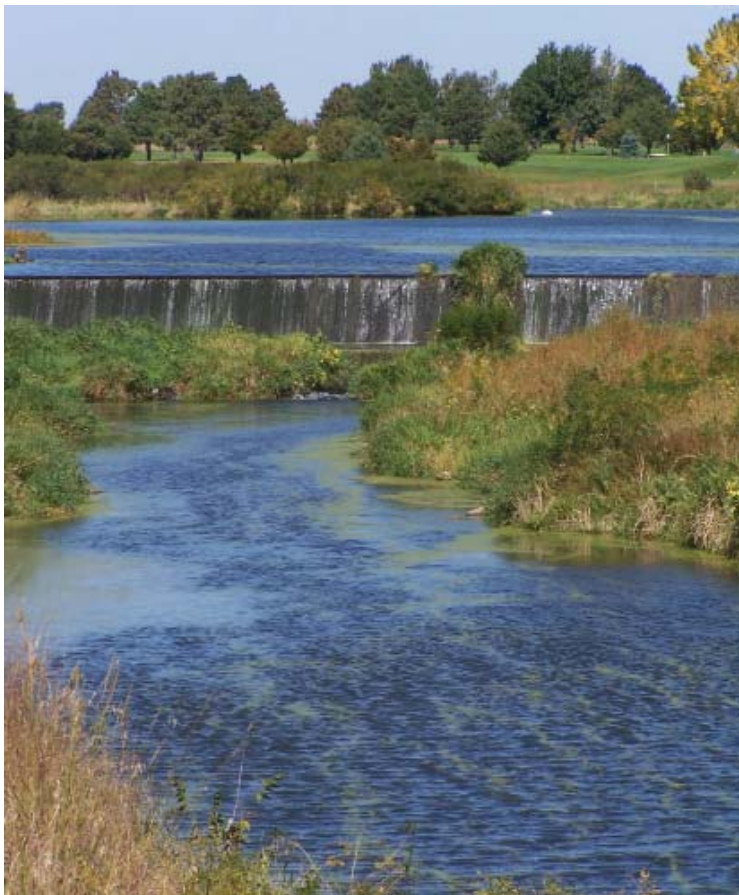
Nebraska has a continental climate, with hot summers and cold winters. Temperatures are highly variable from season to season and year to year.

Precipitation is also variable and ranges from an annual average of 15–20 inches in the west to 30–35 inches in southwest Nebraska.

The growing season in Nebraska fluctuates in length, but on average ranges from 120 days in the extreme northwest to 170 days in the southeast.

For more information regarding Nebraska's climate, visit High Plains Climate Center, University of Nebraska-Lincoln at [www.hprcc.unl.edu](http://www.hprcc.unl.edu).

# ATKINSON • NEBRASKA



**Nebraska Public Power District**

*Always there when you need us*

[www.nppd.com](http://www.nppd.com)

Nebraska Public Power District (NPPD), Nebraska's largest electric utility, assists in economic development for the areas it serves. For more information on NPPD's economic development assistance, contact the Economic Development Department, 1414 15th Street, PO Box 499, Columbus, Nebraska 68602-0499, (877) 275-6773, Ext. 5534, email: [econdev@nppd.com](mailto:econdev@nppd.com), or visit our website at [econdev.nppd.com](http://econdev.nppd.com).

© Nebraska Public Power District, July 2017

C9FC7749